



# 产品手册

PRODUCTS SELECTION

XPOMATPOH 1511

Bio HPLC

# XPOMATPOH 1511

## Bio HPLC



## Efficient biological sample analysis

More efficient LC solution

More application scenarios and analysis needs met



# Bio-inert liquid chromatography system

Efficient biological sample analysis

Bio-inert sample pathway

Made of bio-compatible materials like PEEK and titanium

Easily adapted for biological and extreme pH applications

Minimizing losses due to metal adsorption for reliable biological analysis

## Bio-inert materials, corrosion-resistant and anti-adsorption properties

The pathway, not made of stainless steel materials, maintains the integrity of macromolecules and ensures no adsorption or tailing of protein-based drugs

The bio-compatible solvent and sample pathway guarantee the integrity of biomolecules

Excellent sensitivity by avoiding sample loss due to metal adsorption

## Robustness under extreme conditions

The system remains unaffected even under high salt concentrations or extreme pH conditions, without corrosion or blockage

Suitable for various chromatographic modes: reversed-phase, ion-exchange, size-exclusion, hydrophobic interaction, etc.

Sample recovery improved and residue minimized significantly

## Flexible application matching to ensure stability and reliability

A comprehensive bio-inert system, including pumps, fluidic pathways, sampling valves, syringes, flow cells, and other fluidic components

Standard configuration includes a peristaltic pump for pump plunger cleaning, effectively reducing salt precipitation.



Model	Performance Parameter	Weight	size
P12	Constant flow isocratic pump (10500 psi)	16 Kg	550 mm(D)× 396 mm(W)× 196 mm(H)
P20	Binary pump (10500 PSI)	19 Kg	550 mm(D)× 396 mm(W)× 196 mm(H)
P22	Binary pump (10500 PSI, 2CH degassing unit)	24 Kg	550 mm(D)× 396 mm(W)× 196 mm(H)
P40	Quaternary pump (10500 PSI, 4CH degassing unit)	18 Kg	550 mm(D)× 396 mm(W)× 196 mm(H)
P60	Dual ternary gradient pump (10500 PSI, 6CH degassing unit, ternary gradient valve)	24 Kg	550 mm(D)× 396 mm(W)× 196 mm(H)
UP25	Binary pump (16000 PSI, 2CH degassing unit, ternary gradient valve)	24 Kg	550 mm(D)× 396 mm(W)× 196 mm(H)
P10	Isocratic pump 10500 PSI / >72Mpa # Small volume	8 Kg	320 mm(D)× 135 mm(W)× 147mm(H)
P42	Quaternary pump 10500 PSI / >72Mpa、 5CH degasser	18 Kg	550 mm(D)× 396 mm(W)× 196 mm(H)

Model	Performance Parameter	Weight	size
A10	Auto sampler, 9000 PSI	22 Kg	550 mm(D)× 396 mm(W)× 281 mm(H)
A20	Auto sampler, 18000 PSI	22 Kg	550 mm(D)× 396 mm(W)× 281 mm(H)
A50	Auto sampler, 9000 PSI, high injection volume till 1ml	22 Kg	550 mm(D)× 396 mm(W)× 281 mm(H)
A60	Auto sampler, 9000 PSI, Integral-Loop	23 Kg	718 mm(D)×396 mm(W)× 281 mm(H)
A65	Auto sampler, 18000 PSI, Integral-Loop	23 Kg	718 mm(D)×396 mm(W)× 281 mm(H)
Manual injector	Manual injector With: 7725i, 20ul loop, valve holder, syringe.	0.5Kg	130mm(D)×185 (W) ×95mm(H)
A10C	Auto sample Inhalation 9000PSI, Standard # with cooling function	26 Kg	718 mm(D)×396 mm(W)× 281 mm(H)
A20C	Auto sample Inhalation18000PSI # cooling function	26 Kg	718 mm(D)×396 mm(W)× 281 mm(H)
A50C	Auto sample Inhalation9000 PSI, Mass injection 1mL # cooling function	26 Kg	718 mm(D)×396 mm(W)× 281 mm(H)
A60C	Auto sampler Integral-Loop 9000 PSI, 4X sample tray, 100uL quantitative pump # cooling function	24 Kg	718 mm(D)×396 mm(W)× 281 mm(H)
A65C	Auto sampler Integral-Loop Integral-Loop, 4X sample tray, 100uL quantitative pump # cooling function	24 Kg	718 mm(D)×396 mm(W)× 281 mm(H)

Model	Performance Parameter	Weight	size
C10	Column oven Ambient+5 C-85 C	15 Kg	543 mm(D)× 150 mm(W)× 475 mm(H)
C15	Column oven Ambient+5 C-85 C, 0.003 inch tubing	15 Kg	543 mm(D)× 150 mm(W)× 475 mm(H)
C12	Column oven 4 C-85 C	17 Kg	543 mm(D)× 150 mm(W)× 475 mm(H)
C16	Column oven 4 C-85 C, 0.003 inch tubing	17 Kg	543 mm(D)× 150 mm(W)× 475 mm(H)

## Excellent detection performance for more reliable results

### Diode Array Detector

1024 Pixels, providing a wavelength range of 190~800nm; Reference wavelength eliminates background interference, and has drift correction function

1.2nm and 8nm of slit width available, which can output high-resolution spectra and obtain more accurate monitoring data

Simultaneously monitor 12 channels of wavelengths, and the sample wavelength, sample bandwidth, reference wavelength, and reference bandwidth of all channels can be freely selected

3D spectral monitoring and peak purity calculation function





## UV-Visible Detector

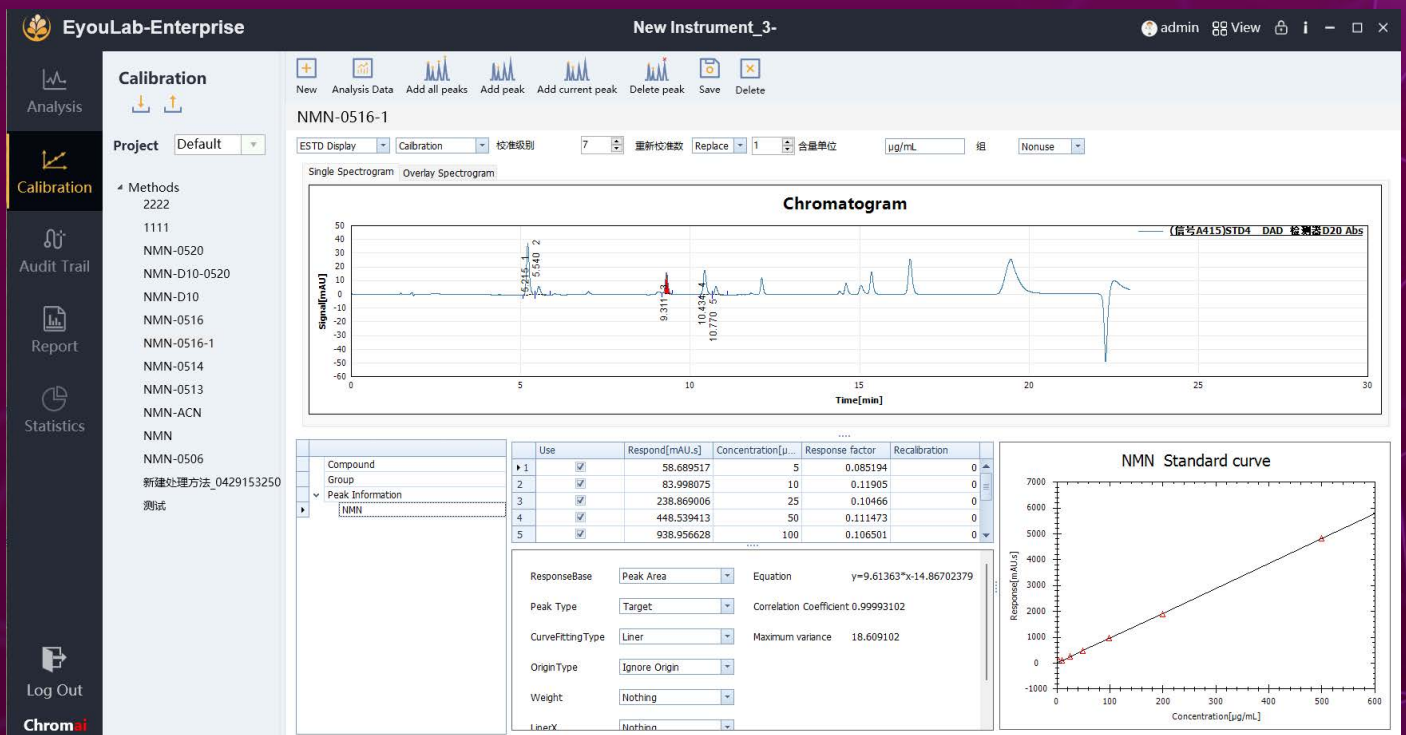
- Automatic switching of optical paths, providing a wavelength range of 190~900nm
- With a data acquisition rate of up to 100Hz, even extremely narrow peaks can be easily captured
- With a linear range of 2.5AU, it can also handle high-concentration samples with ease
- Standard wavelength time program for wavelength switching detection
- Easy-to-maintain module, convenient light source replacement, and a variety of flow cells to choose from



Model	Performance Parameter	Weight	size
D08	UV-vis detector 190nm-640nm	15 Kg	550 mm(D)× 396 mm(W)× 196 mm(H)
D10	UV VIS Detector 190nm-900nm	15 Kg	550 mm(D)× 396 mm(W)× 196 mm(H)
D15	UV VIS Detector 190nm-900nm	15 Kg	550 mm(D)× 396 mm(W)× 196 mm(H)
D20	Diode Array Detector 190nm-640nm	18 Kg	550 mm(D)× 396 mm(W)× 196 mm(H)
D22	Diode-array Detector 1024 pixels 190nm-800nm	18 Kg	550 mm(D)× 396 mm(W)× 196 mm(H)
D23	Diode-array Detector 1024 pixels 190nm-640nm	18 Kg	550 mm(D)× 396 mm(W)× 196 mm(H)
D24	Diode-array Detector 1024 pixels 190nm-800nm	18 Kg	550 mm(D)× 396 mm(W)× 196 mm(H)
D25	Diode Array Detector 190nm-640nm Variable slit	18 Kg	550 mm(D)× 396 mm(W)× 196 mm(H)

# EyouLab CDS

The new generation EyouLab intelligent chromatographic data system is based on database technology for efficient and comprehensive management, fully complying with regulatory compliance requirements such as FDA 21CFR Part 11, GMP, GLP, etc. It has rich and powerful instrument control functions, and has been extended to sample pretreatment and precision medical fields. Through dozens of proprietary technologies, the controlled instruments have intelligent interaction, refined processes, and powerful data analysis capabilities, which can effectively guide customers to ensure that the required data can be effectively and accurately completed through simple operations. EyouLab provides multiple versions of deployment, including standalone, enterprise network, and cloud service versions, which can greatly enhance the overall capabilities of customer application laboratories. Through visual dashboards, data monitoring and management, online diagnosis and maintenance, and method library interaction calls can be achieved. Intelligent and user-friendly, reducing errors, and improving overall laboratory efficiency







## Contact

UVTech

Add: 2nd Floor, Building 3, No. 1 Chaoqian Rd, Changping, Beijing, China PRC.

TEL:18613365565

MAIL: [info@uvtech-cc.com](mailto:info@uvtech-cc.com)